



Latrobe Valley Mine Rehabilitation Commissioner

NEWSLETTER

ISSUE 5 | FEBRUARY 2020

Welcome to our quarterly newsletter, our fifth edition and our first for 2020.

We recognise that for many of us, the start to the new year has been a tough one. Our thoughts are with those communities impacted by the bushfires in East Gippsland and across the border, and we express our thanks for the tireless work of those on the frontline and in the relief and recovery efforts. It's humbling to hear incredible stories of comradery and see the overwhelming community support and resilience, in what has been a very challenging time and will continue to be for a while yet.

As we enter a new decade, 2020 is shaping up to be a year of major milestones for mine rehabilitation planning in the Latrobe Valley.

The next four months is full of activity as ENGIE submits its Rehabilitation and Closure Plan for the Hazelwood mine. Preparations are underway for the delivery of the new Declared Mines Regulations in July. We continue to work closely with the Department of Jobs, Precincts and Regions (DJPR) and the Department of Environment, Land, Water and Planning (DELWP) in reviewing the Latrobe Valley Regional Rehabilitation Strategy (LVRRS) which is due for completion in June.

June will also mark the end of the Commissioner's role. From 30 June, our office will become the new Mine Land Rehabilitation Authority. This means that our name will be changing, but our purpose will remain the same. In coming months, you may see some new faces, with recruitment now underway for four new Board members who will commence at the same time as the Authority is established.

In the meantime, we have recently welcomed two new members of our team. Danielle Tilley started with us in November as Business Support Officer, and Mark Pratt has taken up the role of Technical Advisor in January, working alongside Rhonda Hastie. It is excellent to have them on board so that we can meet the heavy workload as we transition towards the new Mine Land Rehabilitation Authority and the implementation of the LVRRS.

Yours,

Rae Mackay
*Latrobe Valley Mine
Rehabilitation Commissioner*



Contact us

Suite 5, 55 Grey Street
Traralgon VIC 3844

 1800 571 966

 commissioner@lvmmc.vic.gov.au

 lvmmc.vic.gov.au

 [facebook.com/LVminerehab](https://www.facebook.com/LVminerehab)

In this issue

- ENGIE's Rehabilitation and Closure Plan and Concept Master Plan for Hazelwood
- Latrobe Valley Regional Rehabilitation Strategy update
- Questions from the community
- November forum recap
- School holiday 3D model roadshow and our new education program

MINE REHAB UPDATE

ENGIE submits Hazelwood Rehabilitation and Closure Plan

Our office is well into the mammoth task of reviewing more than 90 technical water and site-wide studies that were completed by ENGIE over the last three years and support its Rehabilitation and Closure Plan (RCP) for Hazelwood.

ENGIE is proposing a full pit lake through several development stages that will allow opportunities to test the proposal. The mine could begin filling as early as next year pending government approvals through Earth Resources Regulation.

ENGIE Mine Technical Services Manager James Faithful talked through Hazelwood's rehabilitation plans at a public forum in Morwell in December. The RCP explains the work that will be undertaken to enable ENGIE to meet its rehabilitation goals and deliver a safe, stable and sustainable landform for future beneficial land uses.

Over the past two years, several rehabilitation options were assessed and only two were considered viable – a full or partial pit lake. Both options have advantages and disadvantages.

A full pit lake means almost all coal will be covered by water, lowering the risk of instability and fire. But this landform requires more water, which means steps need to be taken to limit



Above: ENGIE Mine Technical Services Manager James Faithful runs through Hazelwood's rehabilitation plans at a public forum in Morwell in December.

impact on water sources while also ensuring the community can be certain filling will be achieved in reasonable time.

A partial pit lake will use less water, but this landform would support fewer future use options. Ongoing maintenance and monitoring will be required, and there is a higher risk of erosion and fire.

James explained that ENGIE recognises there are challenges for the future and is confident it can work within existing water entitlements and sources to fill the mine – with the first step, achieving a partial pit lake.

Latrobe Valley Regional Rehabilitation Strategy update

The Overview of the proposed Latrobe Valley Regional Rehabilitation Strategy was available for review and comment through the engage.vic.gov.au website.

Many submissions were made on the Overview before the deadline on 17 January. You can view the submissions and read more about the Overview and Strategy at engage.vic.gov.au/latrobe-valley-regional-rehabilitation-strategy.



A master plan for Hazelwood

What would become of Hazelwood if the final rehabilitated landform is a full pit lake?

ENGIE has developed a Concept Master Plan that maps out the potential opportunities and the future investment potential for the site.

The concept framework divides the site into three key areas:

- The Tourism Belt - providing a centre for tourism, recreation and small-scale agriculture, located around the mine lake.
- The Productivity Hub - centres around the key asset of the switchyard to be home to a range of industrial, energy producing and agricultural users that take from and feed into the grid.
- The Mine Lake - the heart of Hazelwood, supporting a range of recreation activities and energy-related activities.

ENGIE says that while the plan is a vision led by them, the success of the redevelopment of Hazelwood will depend on partnerships between community, business (new and existing), service providers (government and private), and other public sector partners (local, state and federal government).

You can view the Concept Master Plan at lvmrc.vic.gov.au/news.

The Tourism Belt



The Productivity Hub



The Mine Lake



OUT AND ABOUT



Questions from the community

Over the last three months, the Commissioner met with members of the Gippsland Lakes Coordinating Committee, Committee for Moe, and teaching staff at Moe's St Kieran's Primary School to talk all things mine rehabilitation. Here are a few of the questions that were asked.

Why can't we use the desalination plant?

At the present time, desalinated water and the transfer of it to the Latrobe Valley is considered to be too costly for mine rehabilitation compared to existing water sources. This and other alternative water sources, such as recycled treated wastewater, may become more feasible or attractive if low water availability in the Latrobe system limits rehabilitation progress significantly.

Is it too expensive to create clean energy with brown coal?

The [Hydrogen Energy Supply Chain](#) pilot project plans to transform brown coal from Loy Yang mine into hydrogen and transport it to Japan. For it to be feasible and successful, carbon, capture and storage would be needed. The [CarbonNet project](#) led by the Victorian and Federal Governments, is investigating the potential for establishing a commercial-scale site to capture and store carbon in Bass Strait.

What can we do as a community?

Community members have an important role in suggesting ideas and opportunities linked to mine rehabilitation plans and outcomes. Community suggestions will help make decisions about future land use in the Latrobe Valley including the rehabilitated land surrounding the mines.

Stay up to date with the new Mine Land Rehabilitation Authority

Our name is changing, but our purpose will remain the same.

From 30 June 2020, the new Mine Land Rehabilitation Authority will replace and succeed the office of the Latrobe Valley Mine Rehabilitation Commissioner.

During this time and from the commencement of the new Authority, we will continue to share news and information with those on our mailing list.

If you'd like to sign up or to unsubscribe, complete the form at lvmmc.vic.gov.au/contact or email commissioner@lvmmc.vic.gov.au.

November forum recap

We had a great turnout to our public forum in Morwell in November, with more than 90 people attending.

The forum featured presentations by the Commissioner Professor Rae Mackay, DJPR Acting Director Coal Resources Victoria Anthony Feigl, and a panel session with Jon Missen from AGL Loy Yang, Antonia Scrase from EnergyAustralia Yallourn and James Faithful from ENGIE Hazelwood (below).

A quick vox pop in the room indicated the majority of those in the audience who opted for a pit lake (above).

It's always pleasing to see community members interested in discussions about mine rehabilitation with many questions received from the floor.

You can view a recap of the event and responses to the questions at lvmmc.vic.gov.au/what-have-we-learned. Thank you to everyone who came along and made it a success.



WHAT'S ON

Community group meetings

The Commissioner and team frequently attend community group meetings to chat about mine rehabilitation and answer your questions. Our next meetings will be with:

Gurnaikurnai Land and Waters Aboriginal Corporation (GLaWAC)

Wednesday 4 March

Gippsland Environment Group

Wednesday 4 March

Latrobe Valley Field Naturalists Club

Friday 28 August



Are you a teacher planning your terms for the year?

We're offering free education sessions for students in the Latrobe Valley to learn more about mine rehabilitation in our region.

Our lesson plans are suited to primary and secondary school learning and have been developed to meet the Victorian Curriculum.

Students participate in interactive discussions featuring hands-on demonstrations, role-play, group activities, and learn about the Latrobe Valley landscape, towns and mines using our 3D timber model.

If you would like more information or to book a free session, please visit lvmrc.vic.gov.au/education or call 1800 571 966. You can also view some of the activities at our pop-up displays in April.



Would you like the Commissioner to come to your next community group meeting? Call us to arrange on 1800 571 966 or email commissioner@lvmrc.vic.gov.au

Save the date – 17 June 2020

Join us for the Commissioner's final public forum on Wednesday 17 June. More details to come.

School holiday fun with our 3D model roadshow

This April, we're taking our 3D model of the Latrobe Valley to you.

Drop in to our pop-up displays in Traralgon, Morwell and Moe to learn more about mine rehabilitation planning in our region.

Pick up a free seedstick pack, activity sheets for the kids and participate in activities which are also a feature of our new education program for schools.

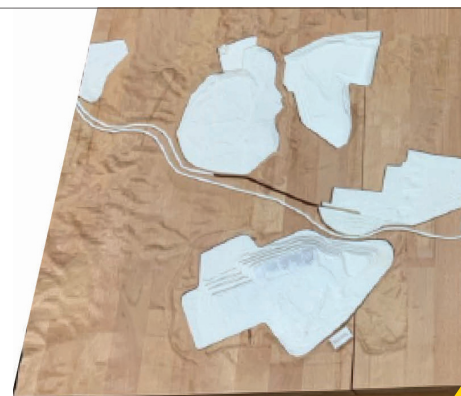
Stay up to date on these events on our [Facebook page](#) or visit lvmrc.vic.gov.au/events.

Mid Valley Morwell
Food Court near Woolworths
11am – 3pm
Tuesday 30 March

Stockland Traralgon
Food Court opposite Donut King
11am – 3pm
Wednesday 1 April
Thursday 2 April

After school holidays:

Moe Library & Chit Chat Coffee Cart
10am – 12pm
Tuesday 23 April



Any questions?

The Commissioner and his team will keep you informed about mine rehabilitation planning and encourages lively discussions with community members. If you have any questions, or if you'd like to arrange a meeting with the Commissioner, please contact our Traralgon office on 1800 571 966, email commissioner@lvmrc.vic.gov.au. To stay up to date, you can subscribe to our newsletter at lvmrc.vic.gov.au/contact or connect with us at facebook.com/lvminerehab.