



**Latrobe Valley  
Mine Rehabilitation  
Commissioner**

# Mine Rehabilitation Planning

The Story So Far



# Mine Rehabilitation Planning

A brief history since 2014

Community views

What have we learned?

- Ground movements
- Water availability
- Land use

Are we there yet?

- Regulating rehabilitation
- Water for rehabilitation
- Alternative rehabilitation options



Yallourn North Open Cut

# A brief history since the Hazelwood Mine Fire

## 2014

Feb : Hazelwood Mine Fire

Aug : HMF Inquiry on fire management and health

## 2015

Apr : HMF Inquiry reopened to include mine rehabilitation

## 2016

Jun : Victorian Government Implementation Plan (246 actions, 56 actions rehab related)

Dec : LVRRS project commenced to address knowledge gaps for water-based rehabilitation. Integrated Mines Research Group 10 year research plan commenced.

## 2017

Feb : ENGIE's planning period for Hazelwood's rehabilitation and closure approved

Mar : Hazelwood Power Station closed

Jun : Commissioner appointed

## 2018

Jun : Mine Licences extended to include rehabilitation

## 2019

Oct : LVRRS geotechnical and water synopsis reports published, Draft Preliminary Land Use Vision released for public consultation

Nov : LVRRS Overview released

## 2020

Feb : ENGIE Hazelwood Rehabilitation and Closure Plan submitted for approval

May : LVRRS Overview Consultation Report released

Jun : LVRRS Vision Consultation Report released

*Jun : LVRR Strategy published*

*Jun : Commissioner superseded by Mine Land Rehabilitation Authority*

*Dec : Declared Mine regulations*

# Community Views

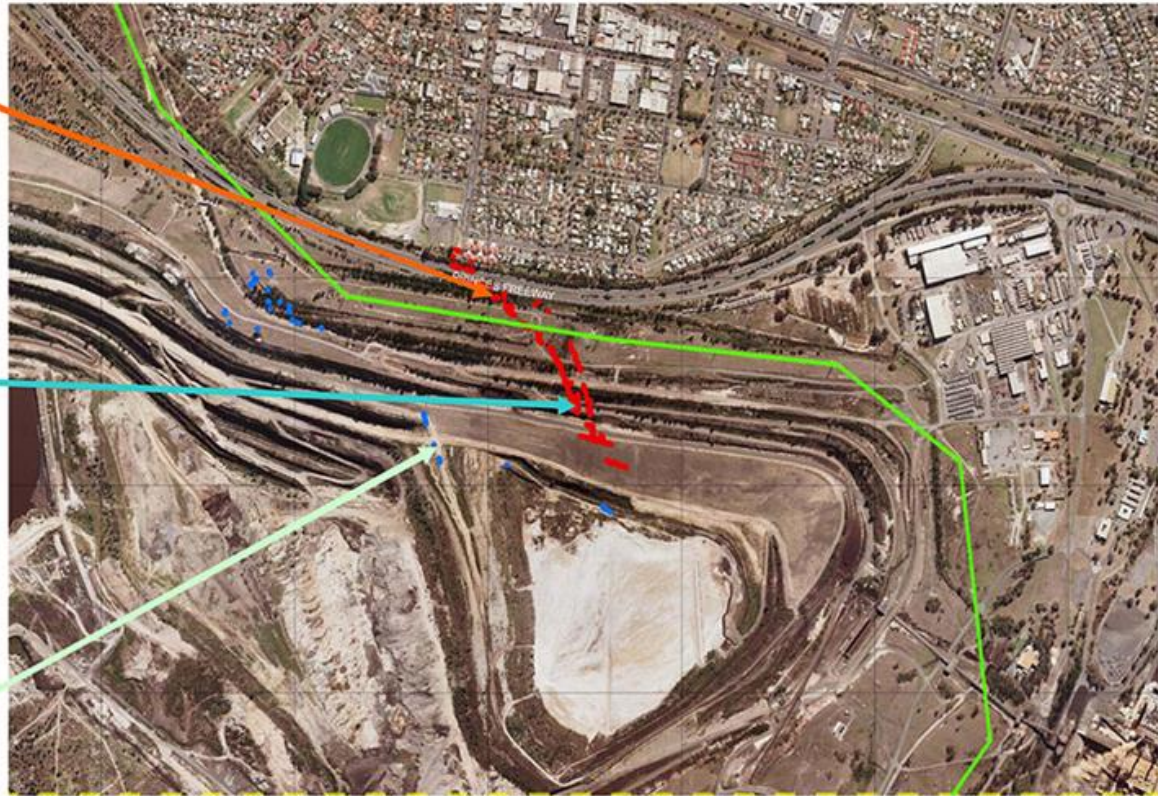
Opinions on rehabilitation are many and varied but some core ideas have been put forward:

- Final landforms should be **productive/useful** and **attractive**
- **Alternative options to pit lakes** should be considered further.
- If pit lakes are to be implemented then other **water users should not be impacted**, including the environment
- The **economic costs and benefits** of rehabilitation of the mines should be assessed against other resource development opportunities, notably irrigation.
- **Future coal development** for beneficial uses should not be prevented by rehabilitation



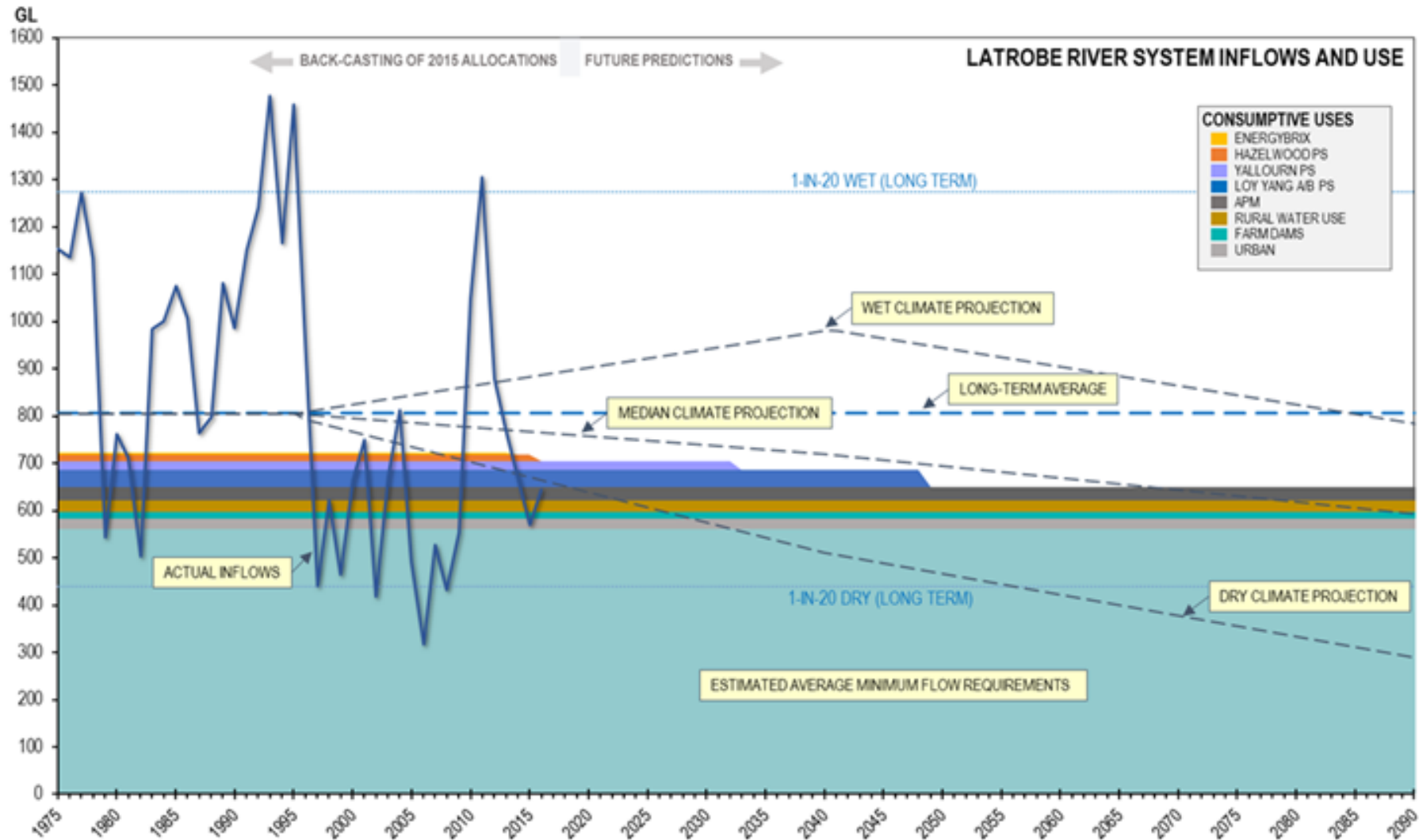
Morwell River

# Ground movements



2011 Hazelwood northern batter movements

# Water Availability



# Land Use Vision

Four Themes:

- Tourism, Liveability, Recreation
- Industry, Business, Commerce
- Agriculture, Energy, Water
- Services, Education, Training

The Valley is:

- a highly liveable place
- a great place for business and to work
- a key part of Victoria's food bowl
- a great place to visit, eat and drink
- an educational attractor

The Valley has a major role in energy production and transmission

Latrobe City is a regional service hub



Yallourn Rehabilitation

**Are we there yet?**

Not quite!





# Regulating rehabilitation

- Updated Regulations for Earth Resources Regulation (ERR), Environment Protection Authority (EPA) and Worksafe
- Increasing capability and resources of the Regulators
- Introduction of the Mine Land Rehabilitation Authority (MLRA) to oversee Declared Mine Rehabilitation Planning and Implementation
- New requirements for Declared Mine Rehabilitation Plans to include post closure plans and funding



Yallourn Rehabilitation

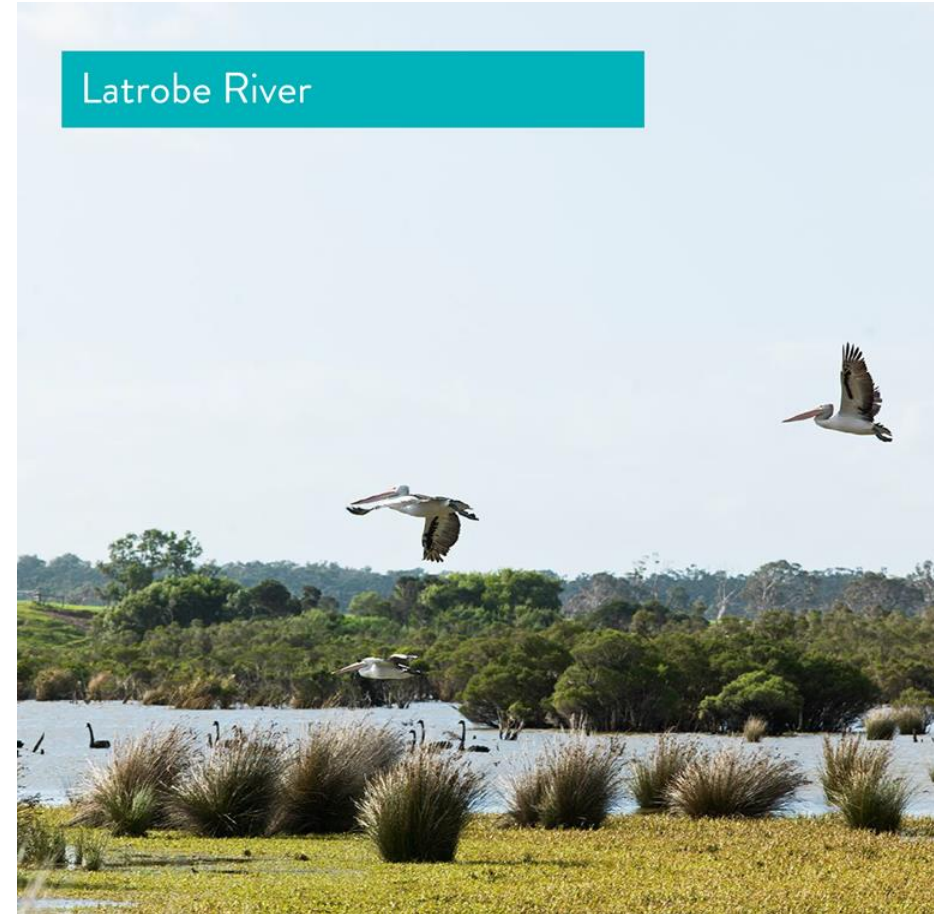
# Water for Rehabilitation

## RISK

- Future climate projections
- Refinement of options for supplying water for rehabilitation and the conditions to be imposed

## ECONOMICS

- Valuation of water uses, including water for rehabilitation
- Alternative water supply options



# Alternative rehabilitation landforms and risks

For alternative landforms to pit lakes, assess:

- Practicality
- Economics
- Residual Risk and Risk Tolerance



Yallourn Interim Rehab Eastern Batters

# Questions

Use the Q & A for this webinar or SLIDO

For SLIDO: Go to [slido.com](https://www.slido.com) and enter the code `lvrc1`

