

Latrobe Valley Regional Rehabilitation Strategy

Anthony Feigl
Acting Director Coal Resources Victoria
Department of Jobs, Precincts and Regions

Anna May
Director Water Resource Assessment and Planning
Department of Environment, Land, Water and Planning

29 June 2020

Agenda

Latrobe Valley Regional Rehabilitation Strategy (LVRRS)



The LVRRS studies

what were the main findings?



Community & stakeholder views

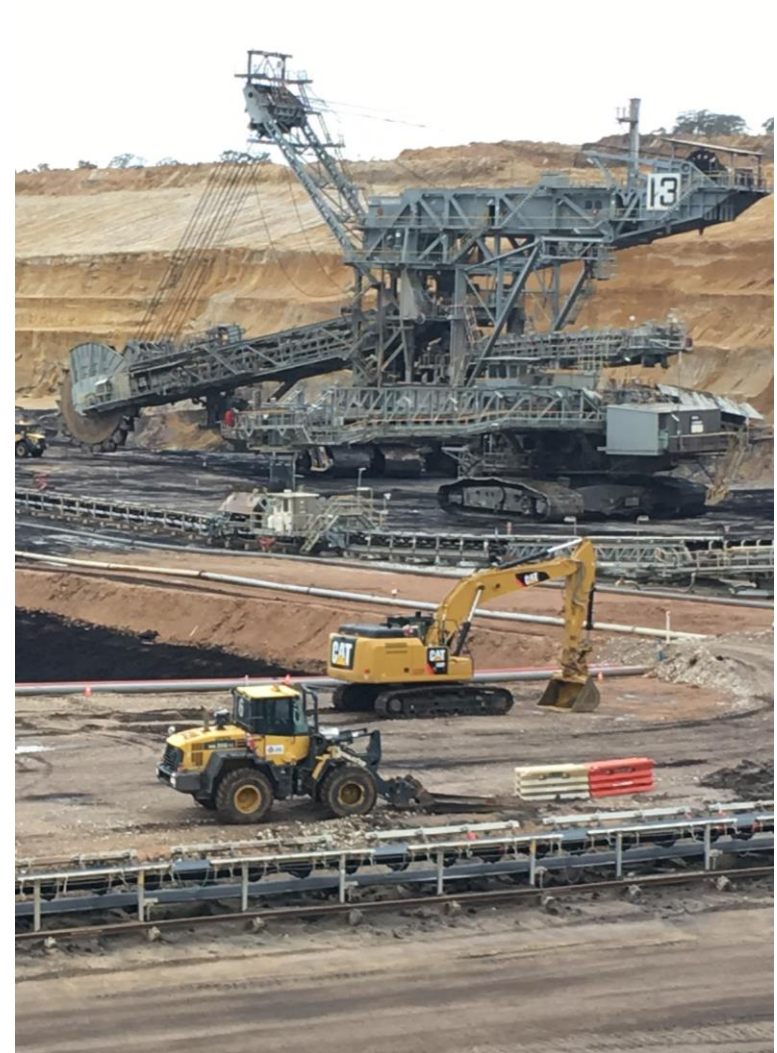
what have we heard?



The Strategy

what does it contain?

Regional Geotechnical Study





Regional Water Study

What stakeholders have told us



Desire to ensure rehabilitation doesn't come at a **cost** to taxpayers



Concern about **water availability**



Need for **clarity and transparency**



Consideration of non-pit lake **options**



Need for **partnership** between government, industry and community to deliver optimal outcomes



Desire for positive legacy with sites offering **amenity**

The LVRRS – an integrated approach

Vision

The Latrobe Valley coal mines and adjacent land are transformed to safe, stable and sustainable landforms which support the next land use

Regional mine rehabilitation outcomes

People, land, environment and infrastructure are protected

Land is returned to a safe, stable and sustainable landform

Aboriginal values are protected

Community are engaged, and their aspirations inform the transformation

Long term benefits and future opportunities to the community are optimised

An integrated approach to rehabilitation and regional resource management is adopted

Implementation principles

Fire risk of rehabilitated land should be no greater than that of the surrounding environment

Traditional Owner involvement in rehabilitation planning should be developed in consultation with Gunaikurnai Land and Waters Aboriginal Corporation

Requirements for ongoing management to sustain a safe and stable landform should be minimised as far as practicable

Community should be consulted on rehabilitation proposals, the potential impacts, and have the opportunity to express their views

Mine rehabilitation should plan for a drying climate. Rehabilitation activities and final landforms should be climate resilient

Mine rehabilitation and regional land use planning should be integrated, and the rehabilitated sites should be suitable for their intended uses

Any water used for mine rehabilitation should not negatively impact on Traditional Owners values, environmental values of the Latrobe River system or the rights of other existing water users

Ground instability and ground movement risks and impacts during rehabilitation and in the long-term should be minimised as far as practicable

Implementation actions

Action	Completion date
Provide guidance on the use of climate change scenarios for water resource planning for mine rehabilitation	Q4 2020
Develop new Declared Mine regulations	Q1 2021
Guidance on potential water sources and access arrangements for mine licensees to undertake rehabilitation	Q2 2021
Further assess feasibility of alternative water sources	Q2 2021
Identify alternative / contingency options if water not available	Q2 2021
Support Integrated Mines Research Group	Q4 2026

Thank you

<https://earthresources.vic.gov.au/projects/lvrrs>

E: lvrrs@ecodev.vic.gov.au