

THE MINE LAND POST

SUMMER 2021

The Mine Land Rehabilitation Authority works with community, industry and government to oversee the rehabilitation planning of declared mine land and ensure transition to sustainable post-mining land uses in Victoria.



IN THIS ISSUE:

- Year in Review 2021
- Post-mining transitions Germany
- Mineland Chats Feedback
- MLRA Team On The Road



From the Acting CEO

Welcome to our final newsletter for 2021. Once again, we're coming to the end of another year, and once again, this has been no ordinary year. As such, we thought this newsletter would be a great opportunity to reflect on the year that has been.

In this Summer 2021 edition we recap the engagement activities we have undertaken, while faced with the extraordinary circumstances that we all lived through this year.

It's also an opportunity to look to the future and things to come. Instead of writing this from home, I'm writing this from our new office in the Latrobe GovHub in Morwell, where our team has been working two to three days each week since late November. We're hoping this hybrid work environment will continue into next year.

We're also looking forward to hosting community events in the wonderful multi-purpose facilities that are available. Early next year we'll be presenting the first of next year's webinars, so stay tuned for the announcement.

Over the past twelve months our team has continued to grow with the addition of Rosemary Joiner as our new Senior Engagement Officer, bringing our staff numbers up to six. By this time next year, the team will ideally have grown to nine which will be the full complement for our current functions.

In the interim, I wish everyone a joyous end to the year and hope everyone cherishes their time with their family and friends.

Yours,

Rhonda Hastie
Acting CEO

Year in Review 2021

Well, what an exciting year it has been for the MLRA! As we approach the end of the year we're looking back at the year that was.

To kick off the year we held two online webinars in February about the Latrobe Valley Regional Rehabilitation Strategy (LVRRS) Implementation Actions 1, 3, 4 and 5.



With guest speakers were from the Department of Environment, Land, Water and Planning (DELWP) and Department of Jobs, Precincts and Regions (DJPR) presenting on the Implementation Actions. To learn more about the LVRRS, watch the webinar recordings or read the transcripts please visit our [website](#).

On 30 June 2021 we celebrated our first year as the Mine Land Rehabilitation Authority (MLRA).

Our Annual Report tabled in the Parliament of Victoria on Thursday 28 October outlines our achievements for our first 12 months of operations. Click here to read the [report](#).

Our Board

The work of the Board over the year has focussed on governance and assessments of the work of the MLRA. The main areas where the Board has had involvement are: review and approval of the MLRA annual report and its submission to the Minister for Resources, review and approval of the MLRA 4 year Corporate Plan, a submission to the Minister, contributions to the MLRA's operational risk assessment and, assessment of the use of Hazelwood mine to receive flows from the Morwell River to allow repair of the Yallourn Morwell River Diversion.

Our July webinar entitled Mine rehabilitation: an inter-generational process, discussed the MLRA's development over its first twelve months of operations, and the timeline for mine land rehabilitation. To watch a recording of the webinar or read the transcript please visit our [website](#).

We also launched our first series of Mineland Chats in October and November, hosting four online webinars. The Mineland Chats were designed to facilitate informal conversations with community members providing a direct opportunity for community feedback and to ask us questions. Read more in the Mineland Chats section.

Throughout the year our Board and our new team members have been on the road touring the local Latrobe Valley mines to get a first-hand experience of mine operations. Hosted by the mine operators from Engie (Hazelwood), Energy Australia (Yallourn) and AGL (Loy Yang) our team had a close up look at the unique aspects at each mine. Read more in the In the News section.

In November we welcomed our sixth team member, with Rosemary Joiner coming on board as our new Senior Engagement Officer. Read more about Rosemary in the Meet the Team section.



Board members: Christine Trotman, Rae Mackay, Ian Nethercoate, Ian Gibson and Claire Miller with ENGIE staff at Hazelwood mine.

Mineland Chats

Building on prior conversations with the community, our recent Mineland Chats were an opportunity for people to ask questions and give their opinions about mine rehabilitation.

Each Mineland Chat was held with a small group of people in an informal setting and structured around a particular theme:

- Rehabilitation Options and Residual Risks
- Access to Water
- Environmental Assessments and Approvals

In October and November, we offered six events; four webinars and two face-to-face events. Registrations for the four Mineland Chat webinars were strong.

Engagement with the face-to-face events was less strong and these events did not proceed. Ticket numbers were capped to ensure everyone had the opportunity to speak. In total 28 people attended the webinars, in addition to the MLRA team.

The key themes that were discussed at the sessions included:

Water

People were keen to see decision-making around water usage and allocation that allows for revisions in the future. There were robust

questions asked about what the community would prefer if given the choice between pit lake mine rehabilitation solutions and healthy local river systems.

Risks

Discussions were had around acceptable levels of risk and how much the community is willing to accept risks around mine land rehabilitation.

Rehabilitation Options

There was a strong interest in positive economic outcomes as part of mine rehabilitation and final landforms which were productive, useful and attractive. This echoed the views expressed in previous feedback.

Economic considerations

People wanted to know more about economic considerations around mine rehabilitation options. Community surveys that did not include costings were not seen as meaningful.

Information and Consultation

Participants expressed a desire to remain informed and engaged through the process of decision-making around mine rehabilitation. Participants expressed the opinion that the level of understanding around mine rehabilitation in the broader community was generally low, meaning the need for information remained high.

You can read the full report [here](#).



MINELAND CHATS

LATROBE VALLEY MINE REHABILITATION CONVERSATIONS

with Acting CEO Rhonda Hastie and Board Chair Rae Mackay

MINELAND.VIC.GOV.AU

Integrating values in post-mining transitions: the experience of Lusatia, Germany

On behalf of the CRC TiME Latrobe Valley Hub the MLRA, CRC TiME and Federation University, hosted a presentation with guest speaker Karsten Feucht from Germany's IBA-Studyhouse.

In this online presentation, held at the Morwell Innovation Centre, Morwell, on 15 November 2021, Karsten discussed the importance of identifying and disseminating the values that are important to the community and the region when redesigning and rehabilitating mine landscapes and regions.

Karsten explained how these mediation methods were successfully applied in the post-mining transition for the Lusatia region, incorporating the recovery of the industrial heritage, urban redevelopment and landscape redesign.



The presentation also discussed the challenges to postmining rehabilitation, the 30 IBA projects, future landscapes, social art, and the ten principles of post mining landscapes. To watch the video of the presentation please click [here](#).

Germany's IBA (Internationale Bauausstellung or International Construction Exhibition) program focuses on urban redevelopment and landscape transformation, and since 2000 has been centred in the Lusatian brown coal mining region in Germany. To read more about Germany's IBA-Studyhouse 30 projects please click [here](#).

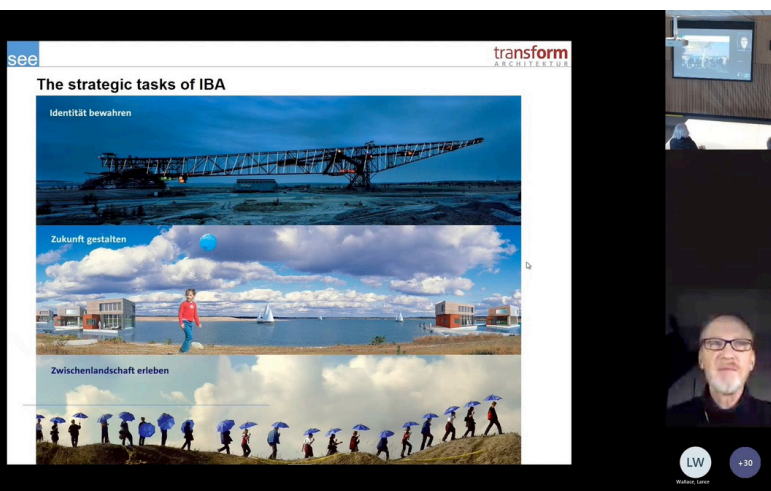


Image: screenshot from the webinar.

For more information about:
Karsten Feucht please click [here](#).
CRC TiME click [here](#).
Federation University's Future Regions Research Centre click [here](#).

In the news

MLRA Team on the road

With the easing of COVID19 restrictions the MLRA team was able to recommence in-person mine tours and visited each of the three Latrobe Valley mines, Engie (Hazelwood), Energy Australia (Yallourn) and AGL (Loy Yang).

These tours were particularly valuable to our new team members giving them insights into the unique geological, engineering, and environmental aspects at each mine, and the scope of the challenges posed by each on their respective rehabilitation trajectories.

The team gained deeper understanding not only of the plans for each mine and the scope of proposed works to achieve safety, stability and sustainability, but also the extent of rehabilitation works already undertaken.



Our team members Nathan and Ellie-Rose along with Rhonda our Acting CEO on tour of the Hazelwood mine site with Dave Shanahan, Ian Hull and Ian Needham from Engie.

Meet Rosemary our Senior Engagement Officer.

We are very please to welcome our new team member Rosemary Joiner who joined us as our Senior Engagement Officer.



A life-long Gippslander, I'm passionate about Gippsland communities and the people who hold them together. When I'm not reading or studying, you'll find me on my porch enjoying the country air.

CRC TiME Latrobe Valley Regional Hub

The Cooperative Research Centre for Transformations in Mining Economies (CRC TiME) launched on 3 November 2021, is working to enable mining regions and communities to transition to prosperous and sustainable post mining futures.

The Regional Hub is a community of practice comprised of local organisations, who share knowledge and develop ideas to support the development and ongoing sustainability of their regions.

The MLRA provides secretariat support to the Hub and our Board Chair Rae Mackay is on the CRC's research committee. To learn more, click [here](#).

SEASON'S GREETINGS!

*WISHING YOU AND YOUR
FAMILY A HAPPY AND
ENJOYABLE HOLIDAY.*



*FROM ALL OF US AT
THE MLRA*

